



175 W. Franklin Street, Suite 120
Kenton, OH 43326

Online at
www.hardinhealth.org

CONNECT WITH US ON SOCIAL



@KentonHardinHealth



@HardinHealth



@KentonHardinHealth

Annual Report 2019



*How the past made **public health** matter.*

Board of Health



Robert Wood
President
2006-2021



Jeryl Kissling
Vice-President
2002-2024



Roger Crates
2003-2025



Larry Oates, MD
2011-2019



Jamie Hunsicker
2017-2024



Angela Aaron
2018-2022



Chase Doll
2018-2023

Flow Chart

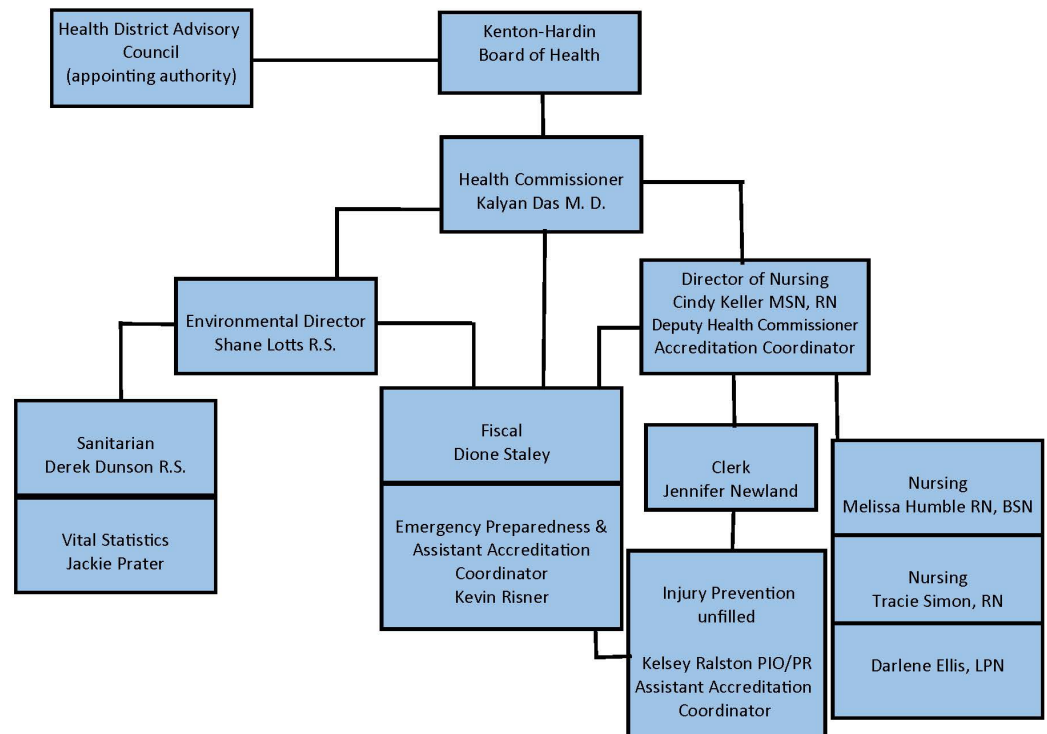
We have acquired a part-time LPN to assist with nursing services, as well as contracted a fiscal position for part time hours.

We have a contract for the PDO (Prescription Drug Overdose) grant that we were awarded as well.

We continue to provide services to Kenton Hardin County and surrounding villages.



Revised: 2/28/2020



Accreditation

12

Domains Cover the 10 Essential Public Health Services, Management, and Governance.

32

Standards Cover the level of achievement Public Health is expected to meet.

102

Measures Evaluation of the Standards mentioned above.

**Submitted
August 30, 2019.**

315

Documents Demonstrate conformity and meeting the requirements of the Measure.

Site visit is scheduled for June 2020.

Nursing

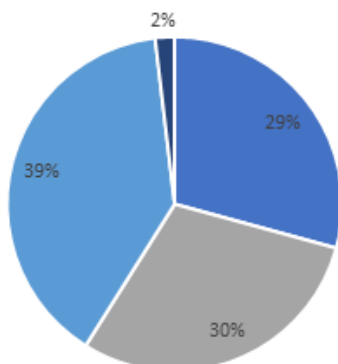
2,189

Total Vaccines Given

**Nursing Services
Provided Include:**

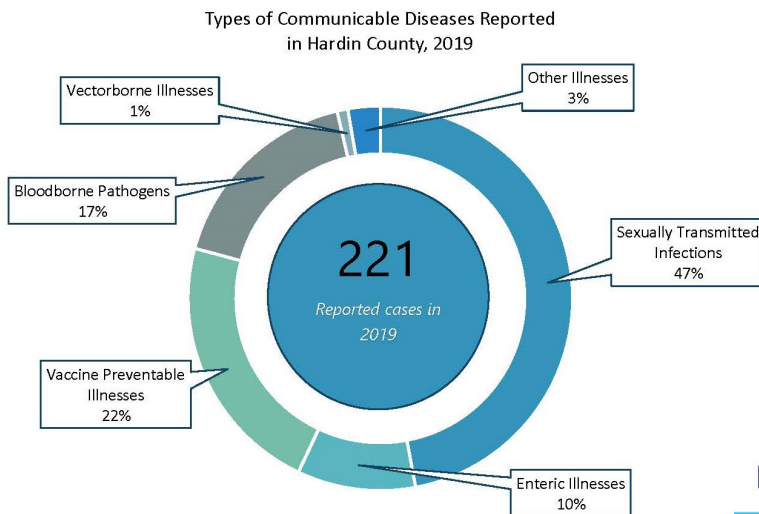
- Bureau for Children with Medical Handicaps
- Cribs for Kids
- Disease Reporting
- Help Me Grow
- Blood Pressure Checks

Vaccines 2019



■ Adult Private Flu ■ Private Pay Vaccine ■ Medicaid/Medicare Vaccines ■ Uninsured

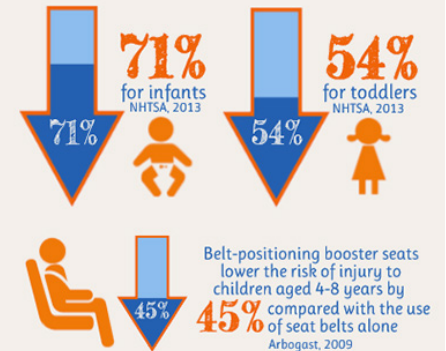
Community Health *(car seat, communicable disease)*



We have a friendly car seat technician that will help you install your car seat correctly! Call today for an appointment!

THE GOOD NEWS

Child safety seats can reduce fatalities by



DID YOU KNOW?



An average of 46% of child safety seats are incorrectly installed or misused.



49% of rear-facing infant car seats were misused.



61% of forward-facing car seats were misused.



20% of booster car seats were misused.



Help Me Grow & BCMH

27 OF 29

Referrals recieved some services from our Help Me Grow Nursing Staff.



BCMh

Bureau for Children with Medical Handicaps assists parents/caregivers in attainment of resources for children (primarily under the age of 18) who have medical conditions such as:

- Diabetes (Type I)
- Cerebral Palsy
- Auto Immune Disorders
- Chromosomal abnormalities
- and other conditions

For more information on both programs call our offices or visit our website at

www.hardinhealth.org

Emergency Preparedness

1

New Plan formed

Cold Chain Management Plan - How vaccines are transported and kept at proper temperature.

2

Updated Plans

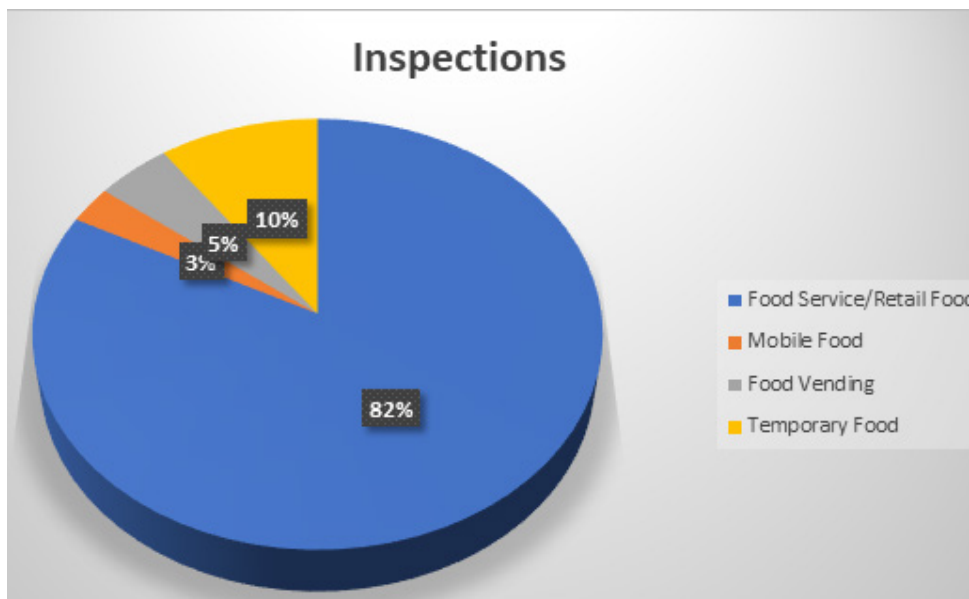
Pandemic Flu - How the health department will respond during a pandemic flu outbreak.

Emergency Response Plan - The plan that houses how to respond to any event.

Hardin County formed and began a Healthcare Coalition in 2019. We currently have an active listserve and have been striving to include as many organizations as possible.



Environmental Health



193

Total Food Licenses Issued in 2019.

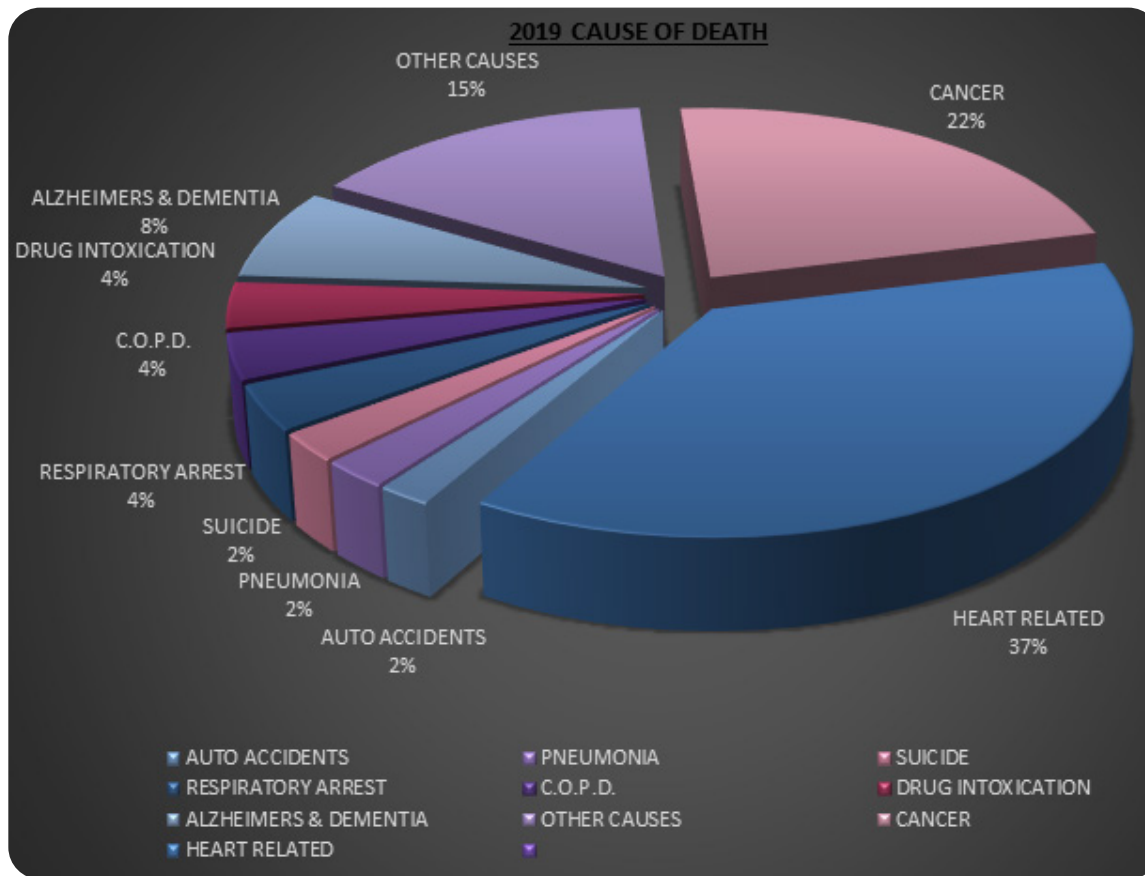
55

Animal Bites Reported

5

Sent for Rabies Testing

Vital Statistics



Birth & Death
Certificates are

\$27.00

Birth Certificates
are statewide
issued from any
Health Department
in Ohio.

Death Certificates
are only issued
in the county the
death occurred in.

1593

Birth Certificate
copies issued in
2019.

Financial

2019 Year End

Fund Name	Balance Carried over from 2018	YTD Revenue	YTD Dispersed	12/31/2019 Balance
District Board of Health	\$ 157,290.11	\$ 551,426.48	\$ 551,458.95	\$ 157,257.64
Food Service	\$ 70,069.16	\$ 41,303.43	\$ 45,669.64	\$ 65,702.95
Triller & Recreational Park	\$ 6,491.85	\$ 2,451.25	\$ 1,242.56	\$ 7,700.54
Private Water System	\$ 11,445.51	\$ 15,630.53	\$ 18,216.57	\$ 8,859.47
Sewage	\$ 3,996.84	\$ 51,003.85	\$ 51,120.27	\$ 3,880.42
Swimming Pools	\$ 419.26	\$ 1,980.00	\$ 2,046.31	\$ 352.95
BCMH Special Fund	\$ 11,396.64	\$ 4,190.00	\$ 9,943.25	\$ 5,643.39
Infrastructure Grant	\$ 13,434.61	\$ 53,730.35	\$ 47,429.79	\$ 19,735.17
Dental Council	\$ 2,904.89	\$ 403.00	\$ 1,344.00	\$ 1,963.89
Reproductive Health/Wellness	\$ 4,763.50	\$ 4,652.59	\$ 8,993.00	\$ 422.64
Help Me Grow	\$ 41,282.82	\$ 22,520.00	\$ 16,840.08	\$ 46,962.74
Medical Reserve Corps	\$ 2,593.37	\$ -	\$ -	\$ 2,593.37
	\$ 326,088.56	\$ 749,291.48	\$ 754,304.42	\$ 321,075.17